

Instruction Manual

Banner Grip®

-banner stretching frame



Above: Open frame to reveal clamps pulling banner tight.



Above: Closed frame to conceal all mounting hardware, NICE !

Manual Version Feb 26, 2020

Any size made: by Graphic size, OD Size, Live Area -1 or 1,000 !

The Banner Grip frames and banners shown in this manual are *small sizes* for ease of explanation and installation. Can make LARGE format Banner Grip frames ANY size, 8', 10', 20', 50 feet x same -any exact size you need 1 or 1,000 ! Patented.

Pages 1-3: Background on what this frame does.

Pages 4-23: Installation instructions with photos.

Banner Grip® –banner stretching frame

All rights strictly enforced. Patents and Patents Pending © 2019

This banner stretching frame will stretch out and beautifully display a banner and requires only raw cut edges, not requiring folded over and sewn edges, grommets, pole sockets or strings (for clamp method only). BUT, if a frame already has grommets, hems, etc. Banner Grip will stretch the banner just the same. This is the only frame on the market that will do this. Many banners automatically come with these grommets, etc., and this frame will display them beautifully. Hidden clamps under the frame edges grip and pull banners tight. This frame will also display signs/graphics printed on plastics and sheet metals by pulling them tight, and eliminating the “waviness.”

This is the only banner frame available that will hold and stretch:

Raw cut edge banners, or banners with sewn edges/hems, grommets or pole sockets, Will also stretch any type of plastic or sheet metal graphic substrates. But, if you’re making banners especially for this frame, then you only need to have banners with raw cut edges –the least expensive type of banner to produce (for clamp method only, hook method will require grommets).

Clamps: Are patented custom designed hardened alloy aluminum with interlocking teeth that clamp onto your banner, but not cut or tear it. Our clamps will not “pull off” the material. All you have to do is make sure you tighten the clamps down with a wrench once you’ve positioned them and hand tightened them.

FEATURES of the Banner Stretching Frame:

1. Easily hang loose banner in frame before tightening, no struggling with precision alignment or sticky tapes; a one-man install for smaller banners;
2. Easily add clamps or hooks anywhere in rail -to get a perfectly tightened banner;
3. Inside or outside use, will not rust, drip, corrode -made of high grade aluminum alloy and stainless steel;
4. Display ANY type of banner: raw edge, or existing banners with grommets, pole sockets or hemmed edges, 13 oz. material suggested.
5. Will also hold rigid, but flexible substrates like corrugated plastics, polystyrene, sheet metal signs. Will eliminate “waviness” and make signs perfectly “flat.”

The banner stretching frame will make your banners look so much better, and professional. Don’t put ugly mounting systems on your walls, the Banner stretching frame will present your graphic beautifully and leave the best impression !



Common banner mounting methods below. You can see they're loose and wrinkled -not a professional way to display banners. They flap in the wind, not attractive. Banner Grip frames can fix this.



Banner Grip frames can fix this.



Photos (above and left): Loose, wrinkled banners, visible mounting hardware, not very attractive.

Because these banners are screwed directly into the brick wall of the building, any new banner requires re-drilling new holes or the existing ones stripping out -too many holes on the building.....

Our banner stretching frame is mounted on the wall -once. Then, successive, same-size banners use the same frame -there is no need to keep drilling/remounting new holes into the brick wall.



Above photo: Tight install, but wind can get into the back of the banner and "flap" it around, "inflate" it; loosen it. Also, the mounting hardware is exposed (above right) -not attractive.

Photo above right:
Conventional "J" hook banner install is ugly.

Banner Grip frames would hide all ugly mounting hardware,

Photo above right:

Close-up of this same banner above, showing pole sockets, poles and the ugly, exposed mounting hardware.

Our banner stretching frame does not require pole sockets or poles, and wind will not get to the back of the banner -to prevent "flapping and inflation" of your banner.

The reason this banner (above left) uses the "mesh-like" wind permeable banner material is to allow wind to pass through -an attempt to minimize "inflation" and stretching. But, opaque, solid banner material looks *much better, and shows colors and images much nicer*. Since our frame does not allow wind into the back of the banner, you can use this much nicer "solid" opaque banner material for an application like this.

Photo below: Another typical small banner install, loose and strings visible.



Photo below: This same Corona banner, but now -nice and tight, mounted in the Banner Grip frame. Mounting hardware is hidden, wind cannot get to the back of the banner. Professional looking frame. Easy to change out to another banner.



***Small format banners and frames are shown for ease of explanation.
ANY large size can be made, sent in sections by UPS, easy assembly on site.***

Parts of Banner stretching frame

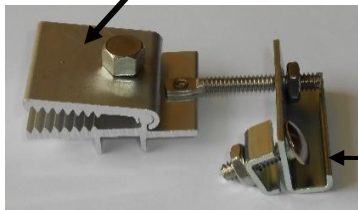
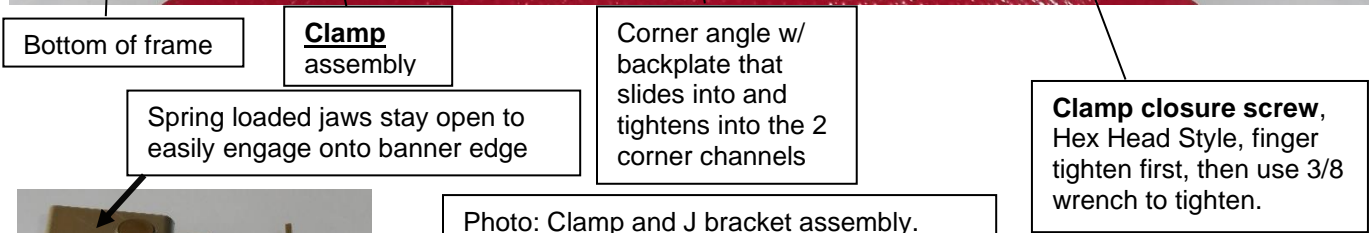
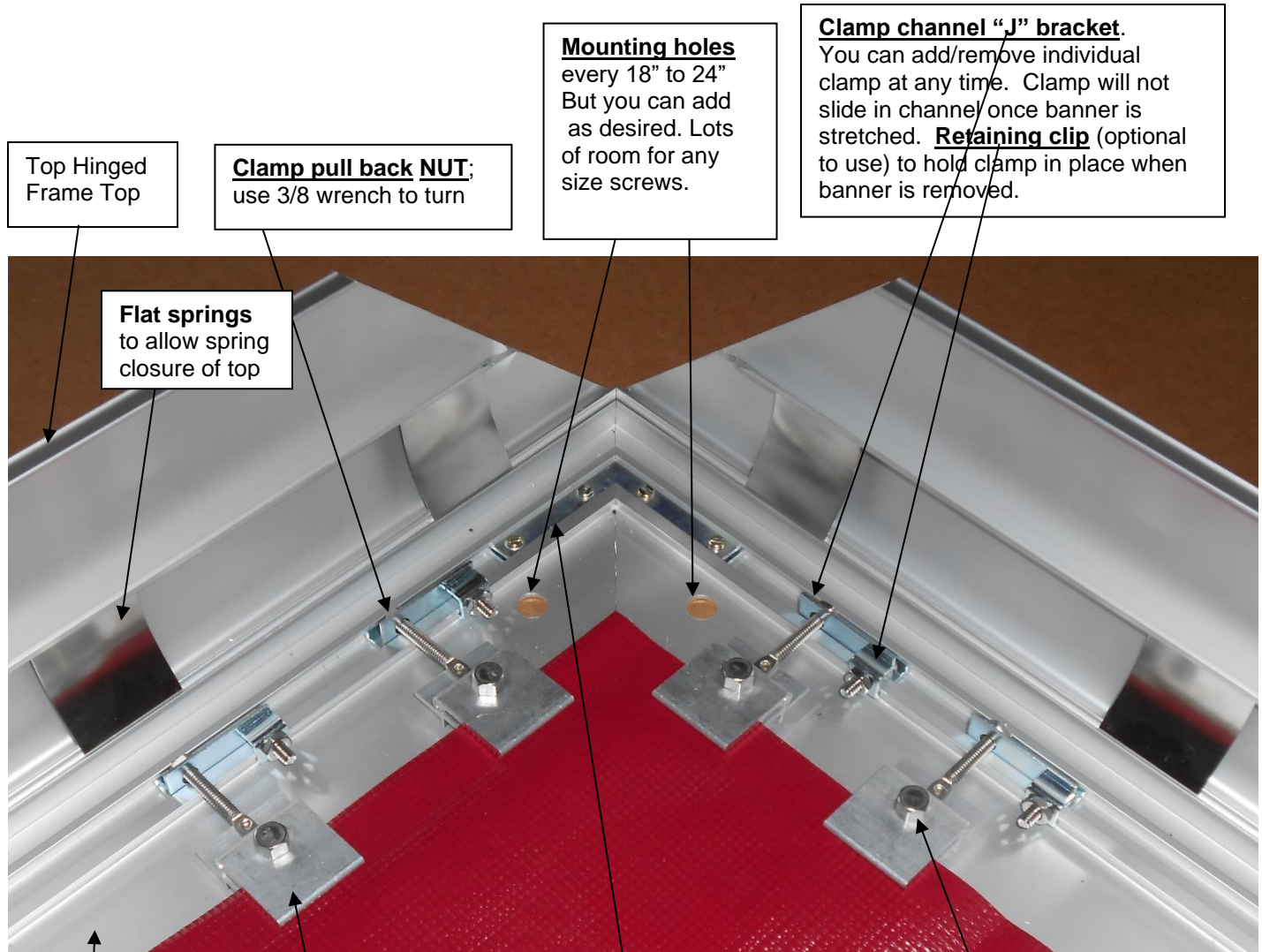
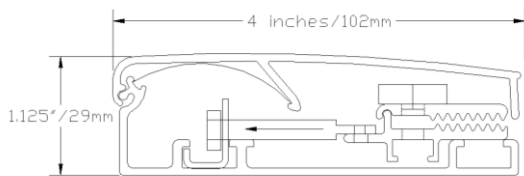
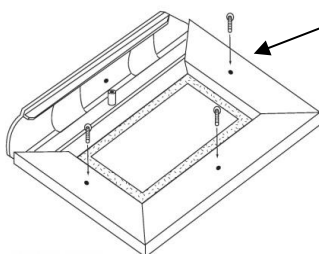


Photo: Clamp and J bracket assembly. This is the clamp assembly that fits into the channel and clamps onto banner to pull it tight.

"J" Bracket



Banner stretching frame dims



Optional:
Option 1 Screw Down
Screw down option so all 4 edges of frame are tightened down onto banner to prevent unauthorized opening of frame sides. Uses security screws, or can use regular screws.

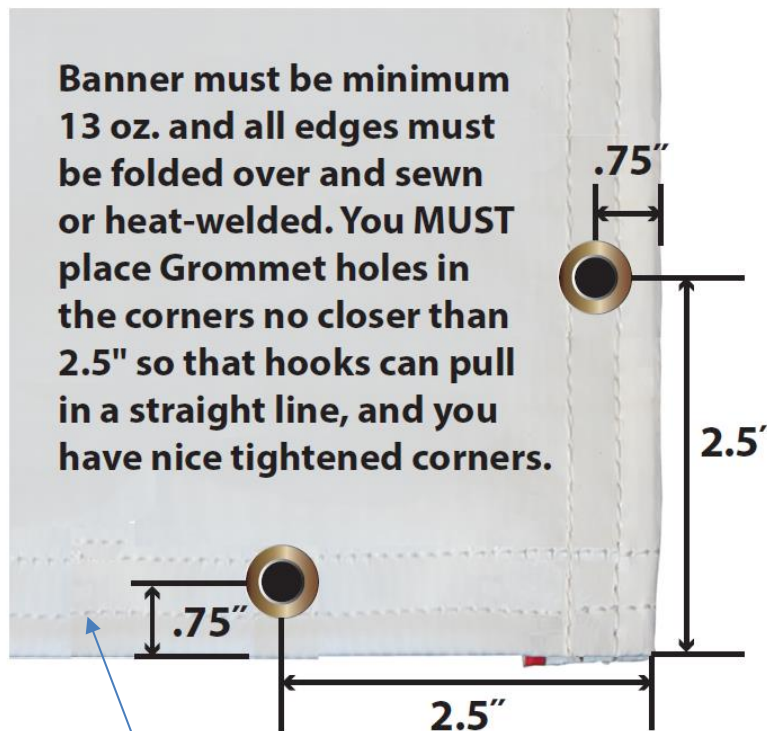
Hook method of tightening banner instead of clamps



As an alternative to our Clamps pictured on page 4, you can also use our Hook method to engage grommet holes on your banner to tighten your banner. ***This is the suggested method for large banners that are taller than 12 feet and/or wider than 20 feet.***

You must have pre-installed grommets in your banner. ***Space your pre-installed grommets on left, right and bottom 18" apart. On TOP EDGE, space grommets 12" apart since top edge will bear more of the weight of the banner.***

Install your grommets 2.5" from all corners, .75" from the edges all around. This is so you can get proper corner stretching for your frame. See below:

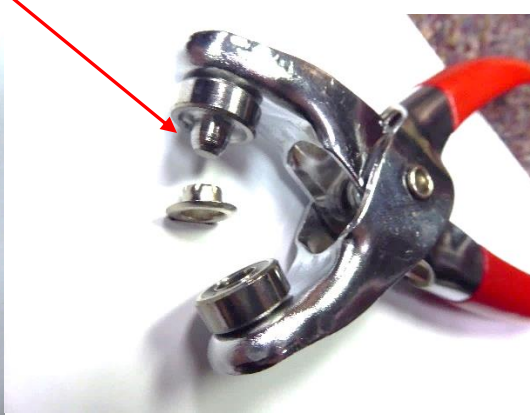


Instructions below are for adding more grommets in between for "micro-tightening" and stretching out wrinkled areas of your banner, if you need. Fastening methods are Patented. See next page.

- a. Your banner MUST have a HEM, either sewn or heat welded. This is to prevent the hooks from tearing out.



- b. Using the red handled tool we supply or any standard $\frac{1}{4}$ " hole punch, punch a hole in the hem about $\frac{3}{4}$ " in from edge. Insert the grommet so that the finished grommet side is on the graphic side of your banner. The nipple part on the tool does the grommet crimping.



The finished side (not the crimped side) is visible on the graphic side of your banner.



Banner Grip™ Installation Instructions:

Follow all directions carefully for a proper, safe installation.

CAUTION: *Frame edges and springs are very sharp and will cut skin. Use protective gloves and safety glasses during entire installation.*

1. Unpacking Warning: Frame sides wrapped in bubble.



Photo no. 1a (above)
DO NOT USE box cutter to remove bubble wrapping, you will scratch and gouge surface of frame.

Frames will arrive un-assembled (4 sides) wrapped in bubble, but will have the spring mounted tops pre-installed. All you have to do is assemble the 4 corners of the frame. All hardware included.



Photo no. 1b (above) CORRECT WAY to unwrap bubble. Use scissors to cut tape; then gently unroll bubble from frame sides.

Quick View- Frame

Open edges on frame to reveal clamps pulling banner tight.



Closed frame to conceal ugly banner edges and hardware, Nice !



2. Before you begin any assembly, check size of your banner to make sure it's the right size for this frame. A sticker on the inside of one of the frame sides indicates the size of banner the frame was made for. Flip open frame sides to check.

Photo 2a (below, next page) This sticker will be on the outer surface of one frame side, with dimension sticker underneath.

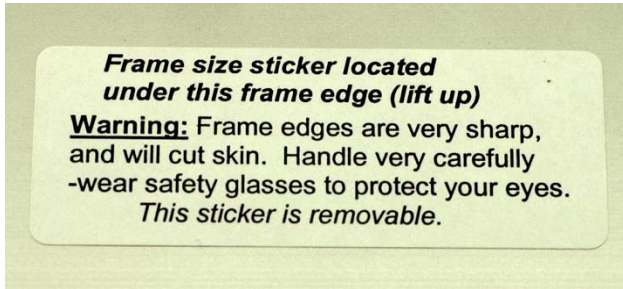


Photo 2b (on left): Sizing info on the inside channel of frame.

This sizing info will have the correct "cut size" of banner that frame was made for.

You must check this before starting installation, to make sure the banner is the correct size for this frame.

Photo 2b (below) This sticker will be on underneath frame edge. This sticker has IMPORTANT banner size info.

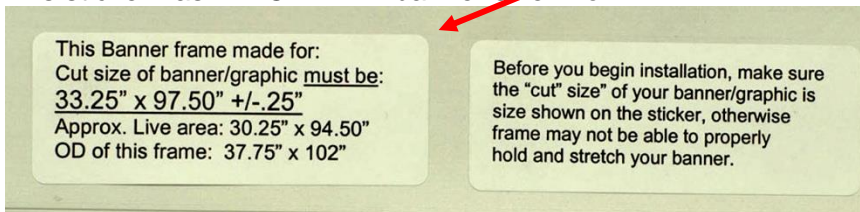


Photo 2c (below): Referring to above size sticker, MEASURE your banner to make sure it will fit into this frame. It must match the size stated on the sticker.



Pull banner snug, then measure length and width to make sure it will fit your frame.

Small format banners and frames are shown for ease of explanation. ANY large size can be made, sent in sections by UPS, easy assembly on site. Sections are approx. 48\" to 80\" max length for opening ease. Sections can also be up to 130\" long if semi-truck shipped.

3. Two ways of assembling frame using the corners:

Ideally, assemble frame on the floor, then wall mount. If a larger frame (over 48" x 96") you will mount one frame side at a time on the wall, then add corners and other frame sides, 1 at a time. Use a square and level to make sure your frame is mounted "square and level."

Photo 3a (below):
Insert corners into
BOTH corner slots.

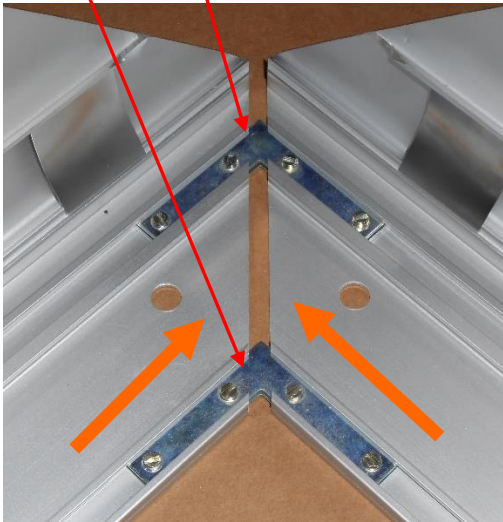


Photo 3a

Tight corner miters

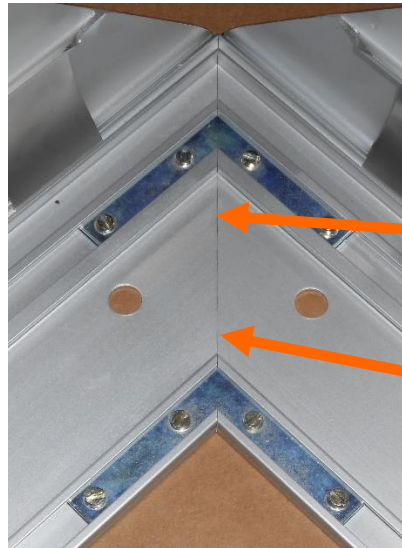


Photo 3b

Photo 3b (left)

Make sure frame
edges align nice
and tight before
screwing down
corners.

No gaps, and
lines meet, before
tightening corners.



Joiner straps connect
longer sections of
frames, and are 48" to
80" max length, for
opening ease and so
that we can ship large
frames by UPS.
Seams are almost
invisible! Easy
assembly on site.

4. Securing Frame to surface.



Photo 4 (above) **WALL MOUNT HOLES .420 DIA**

Make sure wall is FLAT before mounting.

Mount to wall using #10 or larger **screws using all holes provided on your frame**. Mounting is so important because after you tighten your banner, forces will create inward "pull" on the frame sides. When securely screwed to wall, frame will resist the pressure and not pull inward. You may add more holes elsewhere if you wish.

Mount frame to wall
through ALL holes
provided to *prevent*
inward pull of frame when
banner is stretched.

You can add weather-strip to
back of frame for truck mounts,
to prevent wind from getting
into the back of the frame and
"inflating" banner and possibly
blowing it out.

You can use any type of
fastener that is best for your
wall application. Use the
appropriate drywall or mortar
type anchors/screws.

We supply high quality Sharkie brand nylon anchors and #10 zinc sheet metal screws.



Do NOT install the anchor on the inside of the frame, the anchor will pull out. You MUST install the anchor into the hole in the wall, and lightly hammer in. Then, on the inside of the frame, use screw and washer to fasten frame to wall. These anchors and screws are good for brick, concrete, drywall.

5. Inserting clamps into channels on frame.

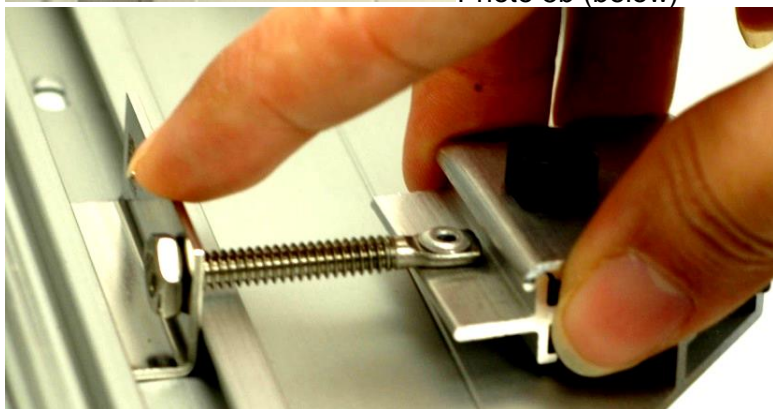
Photo 5a (below)



Photos: How to insert the clamp assembly into frame channel.

1. Angle-in the "J" shaped bracket into corner.
2. Rotate down.
3. The bracket is free to slide in the channel. When you tighten your banner, the bracket will stay in place and not move or fall out of the channel.

Photo 5b (below)

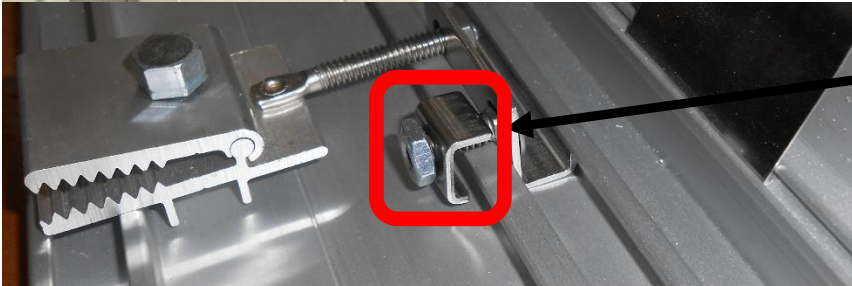


Banner Clamps "How to insert and secure clamps into the Banner Grip™ frame rail"



Photo: How to insert the clamp assembly into the frame channel.

4. Angle-in the "J" shaped bracket into corner.
5. Rotate down.
6. The bracket is free to slide in the channel. When you tighten your banner, the bracket will stay in place and not move or fall out of channel.



Retaining Clip (included and optional to use)

Various Photos

This clip is for the purpose of locking down the bracket/clamp assembly into the channel so the clamp does not slide in the channel. Thus, the clamp will remain positioned in the channel before and after a banner is removed -and tension from the clamps is relieved.

You don't have to use this retaining clip if you don't want to, you can simply remove it or leave it loose.

See photos to see how it should look in your frame.

Note that "longer" leg of "C" shape is on top

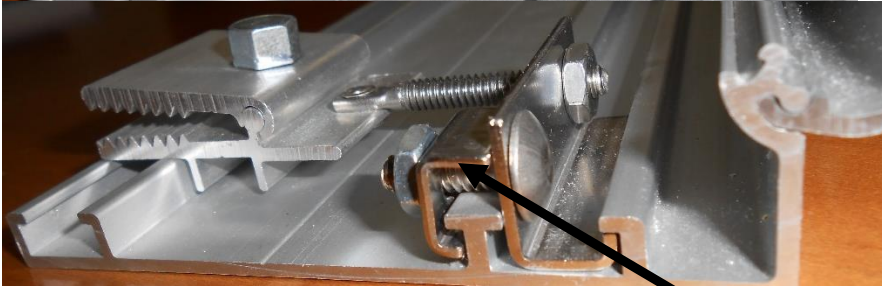
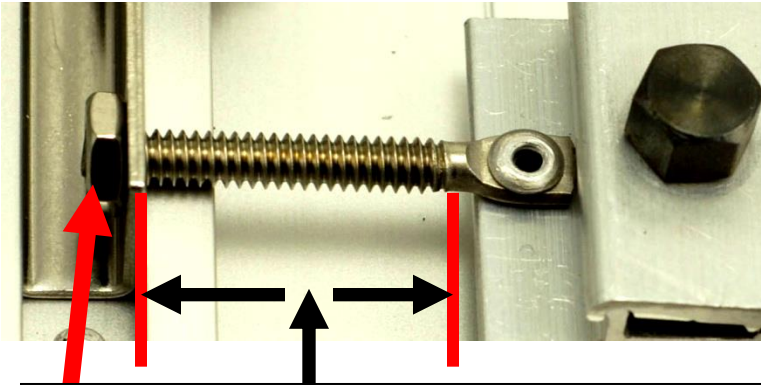


Photo 5c (below) Make sure your clamps are at the “maximum” loose position.



Clamps at Maximum Loose Position.

Make sure clamps are at “maximum: un-tightened” starting position before clamping onto your banner. Nut is spun all the way to the end.

Photo 5c:

Maximum Loose Clamp Position

Shows threaded rod and nut that pulls back clamp for banner tightening.

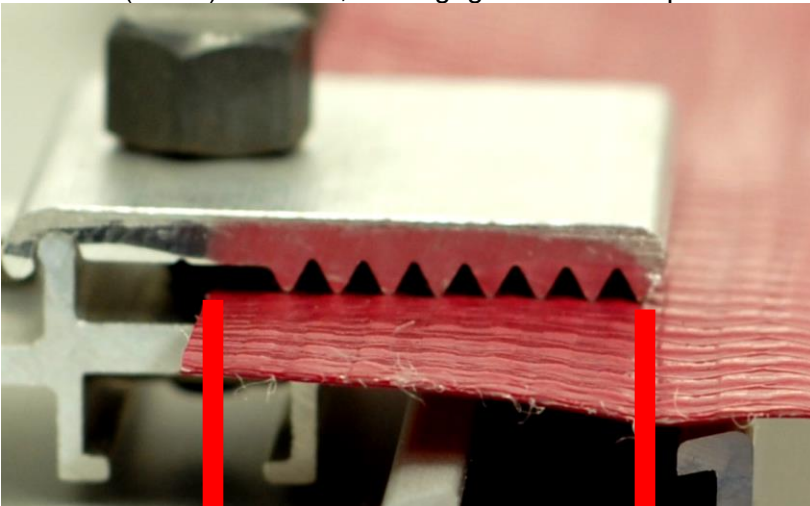
This picture shows clamp at maximum un-tightened position. Nut is un-spun as far as it will go before it falls off.

You will need a 3/8” open end wrench to tighten after your fingers can’t turn it any more for initial tightening.

Correct Size Banner:

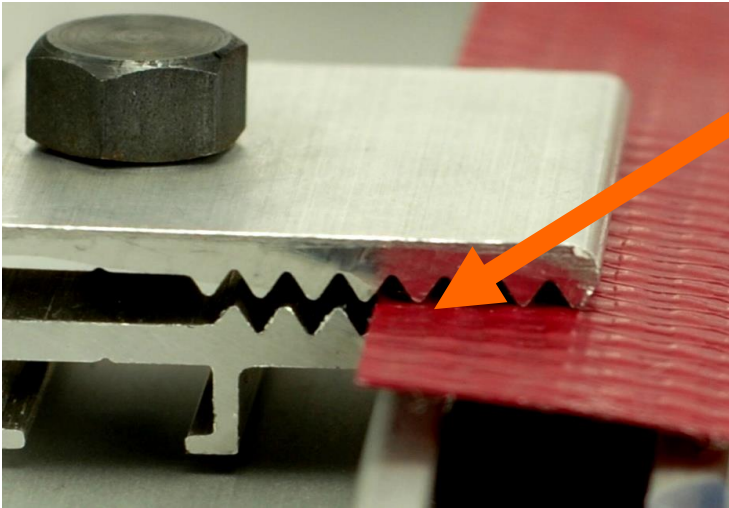
Photo 5d (below): Clamps will fully grip onto banner on opposing sides
-at the clamps' maximum loose position (photo 2d, above).

Photo 5d (below): Correct, full engagement of clamp teeth onto correct size banner.



Clamps on opposing sides will get “full” teeth engagement onto banner.

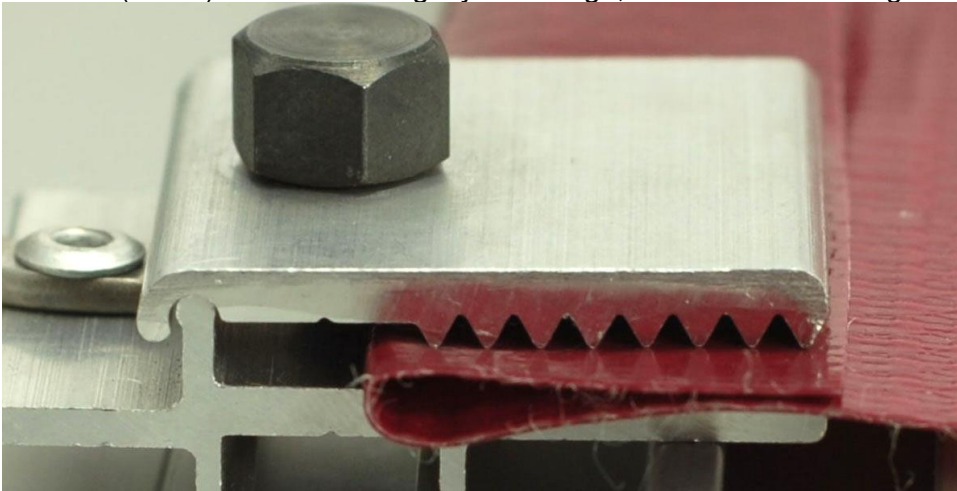
Photo 5e (below): Banner too small, clamps don't go on "all the way."



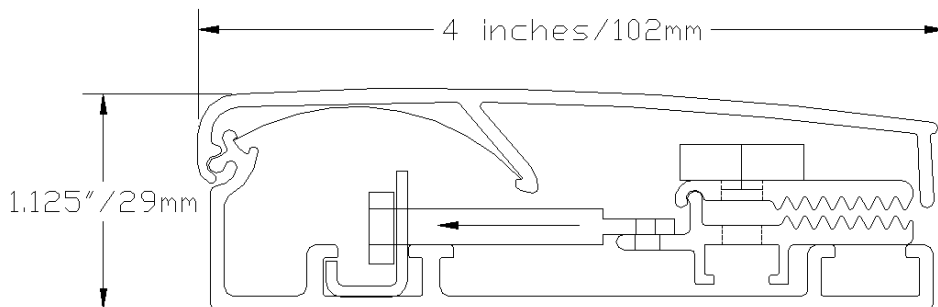
Banner too small, clamps won't go on all the way.

Not correct. Clamp teeth need to go "all the way" onto the banner material on both sides. Otherwise, clamps may pull off. Banner is too small for this frame. Sticker on your frame per photo 2b. above shows correct size of banner for your frame. Banner will have to be remade, or you need a smaller frame.

Photo 5f (below) If banner is slightly "too" large, fold over banner edges to reduce banner size.



If banner is slightly "too large" -you can fold over the banner material and insert this folded over edge into clamp. Make sure to **TIGHTEN** the clamp securely with a 3/8" wrench.

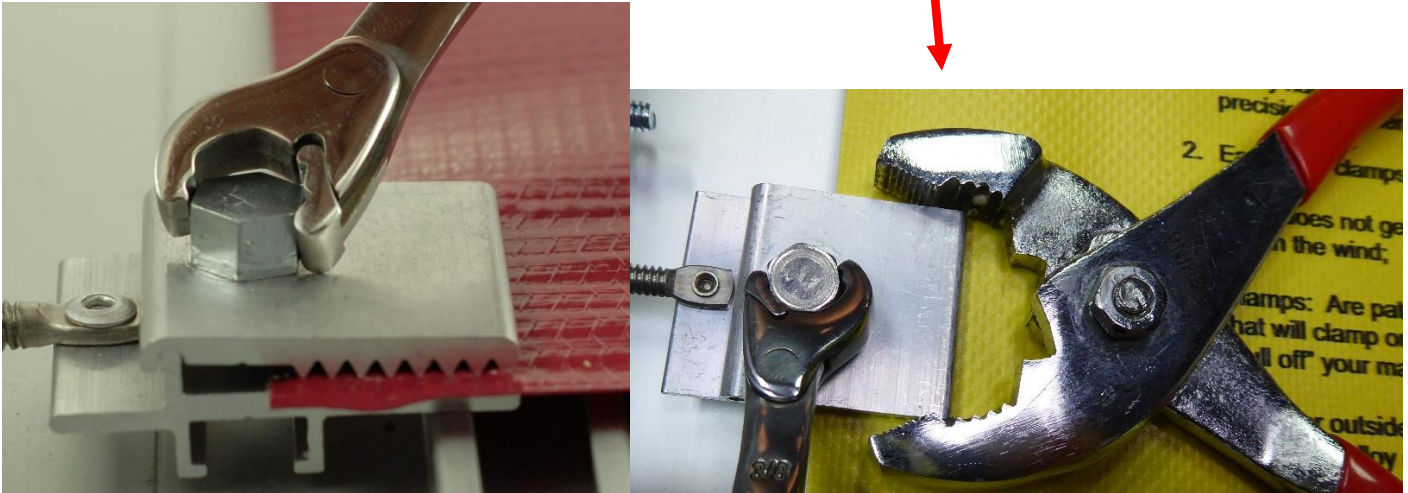


Banner stretching frame dims

6. **TIGHTEN CLAMPS hard BEFORE STRETCHING !**

Space clamps on left, right and bottom 18" apart. On TOP EDGE, space clamps 12" apart since top edge will bear more of the weight of the banner.

Holding the jaw clamp straight with pliers as you're tightening the hex head will avoid the twisting of the clamp, as you're tightening the nut.



YOU must tighten clamps onto your banner material so banner won't "pull out." First finger tighten, then **fully tighten clamps with a 3/8" wrench on hex head.** This is to make sure the clamps will hold firmly onto the banner material, after the banner is fully tensioned. If you don't tighten well enough, the banner material can pull out of the jaws' "teeth."

Photo 6a (below)

How to hang loose banner in frame before tightening:

Mount 2 clamps "tip to tip" on the top left and right sides of your banner.

Tighten clamps, then loosely hang your banner in the wall mounted frame.



Small format banners and frames are shown for ease of explanation.

ANY large size can be made, sent in sections by UPS, easy assembly on site.

Photo 6b (below) Loosely hang the banner in frame by angling (see Photo 5a) the **TOP** clamp assemblies into channel. Do the same for side clamps on both sides. *You will have to loosen the right (or left) **side** clamp that grips the banner to get clamp into channel.*

Then, make sure clamps are tightened down onto banner material.

Photo 6b



*You will have to loosen the right (or left) **side** clamp that grips the banner to get clamp into channel. This is because the clamp holding the banner on the opposite side won't stretch enough to allow you to angle the "J" bracket into the channel.*

Photo 6c (below) Attach 4 more clamps to bottom left and right sides. Tighten clamps.



***Small format banners and frames are shown for ease of explanation.
ANY large size can be made, sent in sections by UPS, easy assembly on site.***

7. Banner Stretching.

Photo 7a (below)



Space clamps 18" apart all around, but space clamps 12" apart on TOP EDGE for frames that are over 96" x 96" because most of the weight of the banner material will be on the top edge.

We suggest adding a removable blue Loctite type threadlocker so that the tensioning nut doesn't wiggle loose in high wind conditions pushing on the banner.

Photo 7b (below)

By spinning this nut, it pulls clamps outward to stretch your banner. First, finger tighten this nut, then use a 3/8 open end wrench to fully tighten.



Photo no. 7b (left):

Maximum Tightened Clamp Position

This picture shows clamp at maximum **tightened** position. Nut pulls clamp back as far as it will go.

First, spin nut with fingers to start tightening, then use a 3/8" open end wrench to tighten.

**Small format banners and frames are shown for ease of explanation.
ANY large size can be made, sent in sections by UPS, easy assembly on site.**

Photo 7c (below)

You may want to add more clamps 12" to 18" apart, as needed to tighten banner nicely.

NOTE: If frame is taller than wider, add more clamps along top edge, as top edge will bear a lot more of the banner weight. Make sure clamps are tightened onto banner material with a wrench. Don't over stretch your banner.

Photo 7c



Space clamps 18" apart all around, but space clamps 12" apart on TOP EDGE for frames that are over 96" x 96" because most of the weight of the banner material will be on the top edge.

Photo 7d (below)

Banner is stretched; banner edges are covered; frame sides closed down. Very nice and professional looking !



**Don't use old-fashioned/unattractive banner mounting methods.
Make your banner display beautiful with the Banner Grip™ frame!
Made to ANY custom size you need, 1 to 1,000, fast ! Made in USA !**

Banner Grip™ in use at actual sites:



Size of Banner Grip™ frame above: 7.5 feet x 34 feet, Inches= 90" x 408", cm= 229cm x 1036cm
Banner is perfectly stretched -no sags or wrinkles. Beautifully framed. Easy to change to another banner.



Canada install: Nice, clean framed look. No ugly straps, hooks, hardware or edges visible -all hidden ! Size of Banner Grip™ frame above: 10 feet x 16 feet, Inches= 120" x 192", cm= 305cm x 488cm

Photo above: Tampa Bay History Center Bldg.
(6) Banner Grip frames installed on custom made mounts, size 8.5 feet wide x 27 feet height, each banner.



California Pizza Kitchen

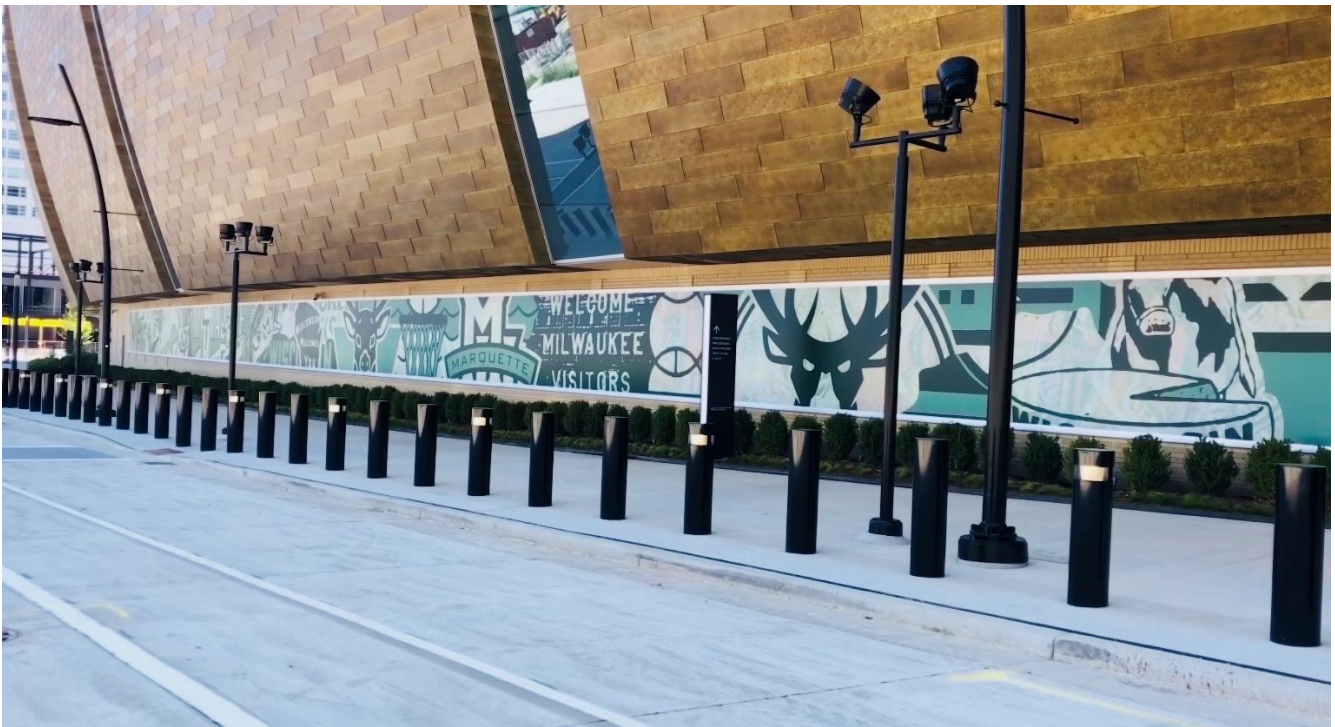
NYC 9/11 Memorial Banner



Banner in Green Bay Packer fans territory



Custom angle Banner Grip frame



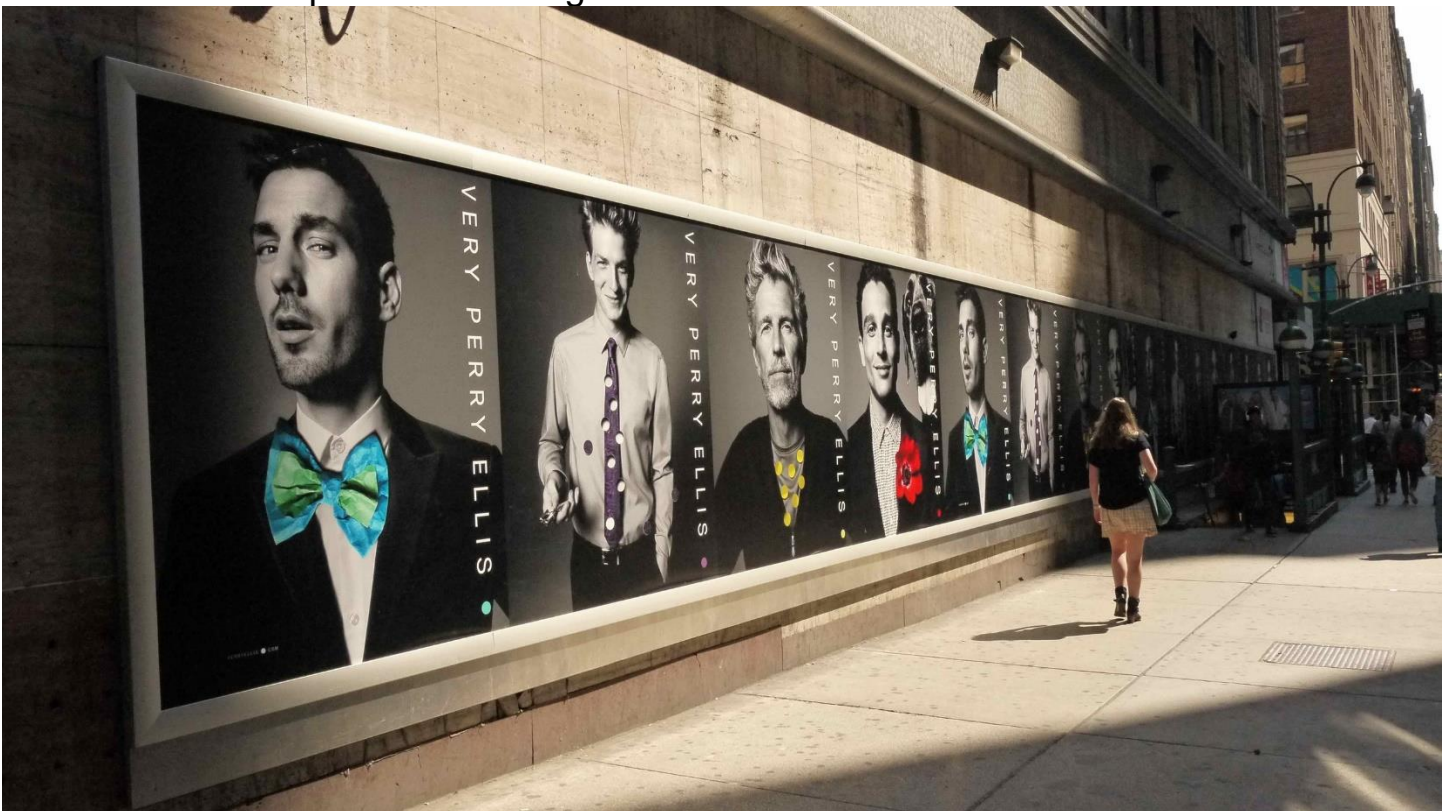
Banner Grip frames outside the huge Milwaukee Bucks Basketball Arena, Milwaukee, WI



Microsoft ad at NorthBridge Mall on Michigan Ave in Chicago, IL



Above: Banner Grip mounted on light box. Below: On streets of NYC.





Above Banner Grip displays on the streets of NYC



Above: Koko Marina Theater complex, Honolulu, HI

Framing of the Mona Lisa

The original Mona Lisa is 30" tall x 20.875" wide. We obtained a high resolution photograph of the original. Maintaining the correct proportions, we enlarged the image to 136" tall x 96" wide. It was digitally printed on vinyl banner material, 4 color process, UV inks. Here we show how beautifully our frame can display this image, on the side of one of our factory buildings. See below.



Mounting frame sides to our building.



Hanging banner with our patented mini clamps.

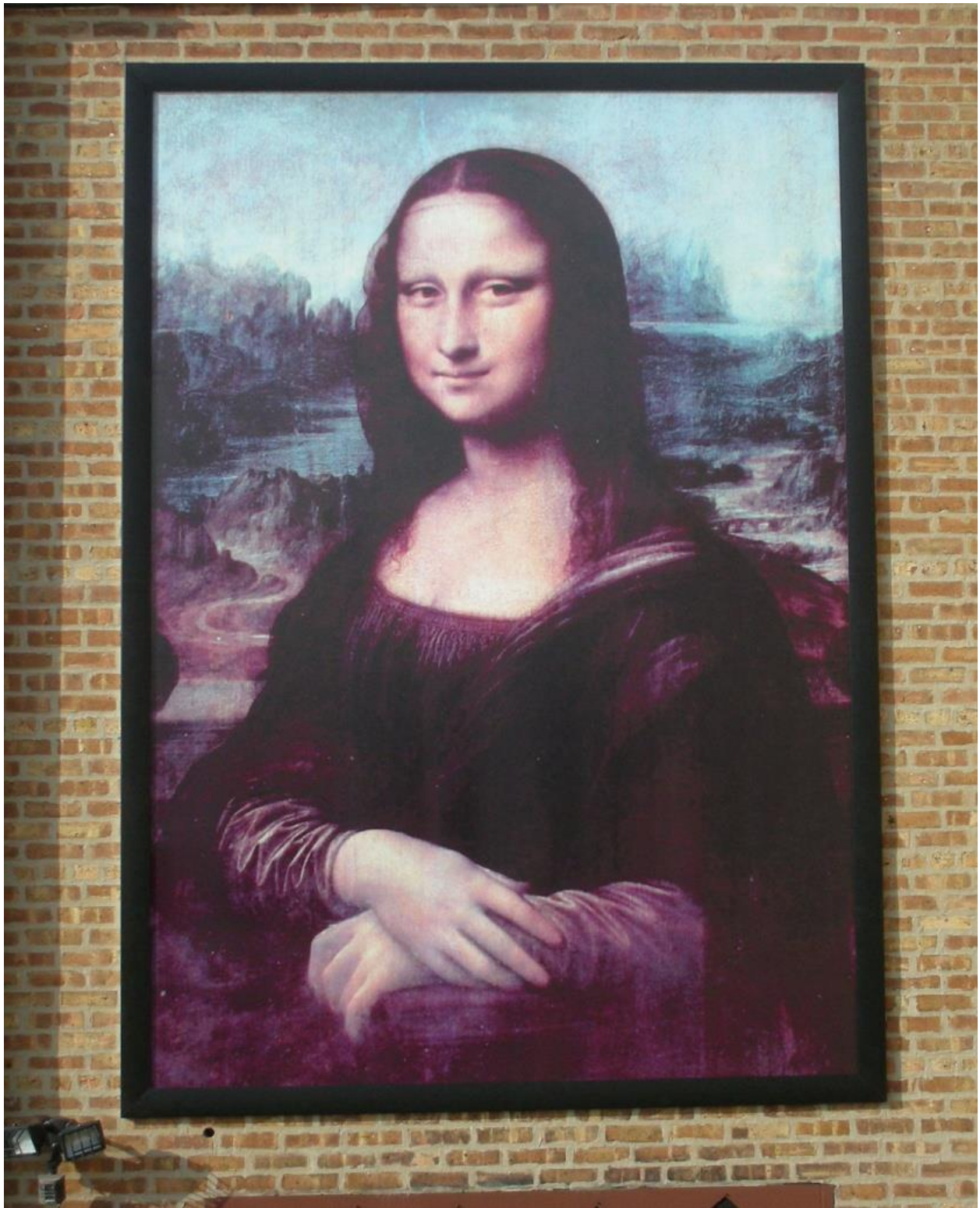


Adding clamps all around.



Clamp tightening finished, frame sides closed,
90 minutes total installation time.

Mona Lisa 136" tall x 96" wide



Beautifully displayed, not a crease or wave anywhere, picture perfect !

Outdoor or indoor use, aluminum and stainless steel components, long lasting, no rust drips on wall ! Patents Pending and Patented. COPYRIGHT 2020

MADE in the USA !